

	This Class	Comparison Group		
	#	%	#	%
1. Requirement or elective status				
In students' major field of study	6	66.7%	56	61.5%
University requirement for degree program	0	0.0%	3	3.3%
An elective (whether or not in major)	3	33.3%	32	35.2%
	<hr/>	<hr/>	<hr/>	<hr/>
	9	100.0%	91	100.0%
2. Did students' academic background prepare them				
Yes	8	100%	69	84.1%
No	0	0.0%	13	15.9%
	<hr/>	<hr/>	<hr/>	<hr/>
	8	100.0%	82	100.0%
3. Classification of student				
Freshman	0	0.0%	0	0.0%
Sophomore	0	0.0%	0	0.0%
Junior	0	0.0%	5	5.6%
Senior	6	75.0%	77	85.6%
Graduate student	1	12.5%	4	4.4%
Other	1	12.5%	4	4.4%
	<hr/>	<hr/>	<hr/>	<hr/>
	8	100.0%	90	100.0%
4. Approximate number of absences from this class				
Less than 3	8	88.9%	70	76.9%
3-5	1	11.1%	17	18.7%
6-9	0	0.0%	3	3.3%
9-11	0	0.0%	1	1.1%
12 or more	0	0.0%	0	0.0%
	<hr/>	<hr/>	<hr/>	<hr/>
	9	100.0%	91	100.0%
5. Approximate number of hours/week in preparation				
Less than 3	5	55.6%	25	27.5%
3-5	4	44.4%	42	46.2%
6-9	0	0.0%	17	18.7%
9-11	0	0.0%	6	6.6%
12 or more	0	0.0%	1	1.1%
	<hr/>	<hr/>	<hr/>	<hr/>
	9	100.0%	91	100.0%
6. Grade student expects to receive in course				
A	4	44.4%	35	38.5%
B	3	33.3%	43	47.3%
C	2	22.2%	12	13.2%
D	0	0.0%	1	1.1%
F	0	0.0%	0	0.0%
I	0	0.0%	0	0.0%
	<hr/>	<hr/>	<hr/>	<hr/>
	9	100.0%	91	100.0%

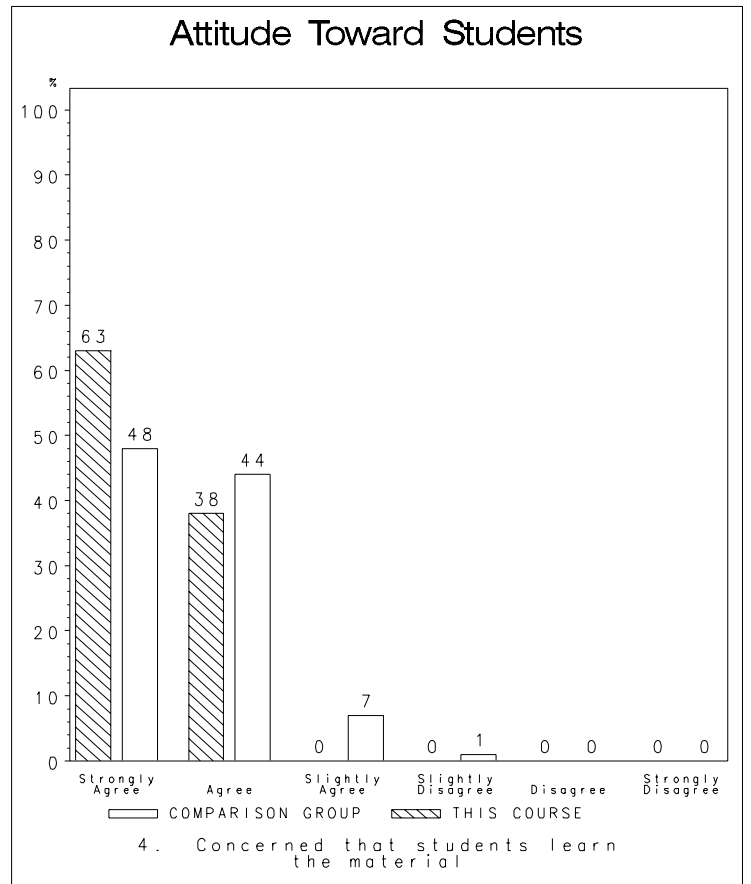
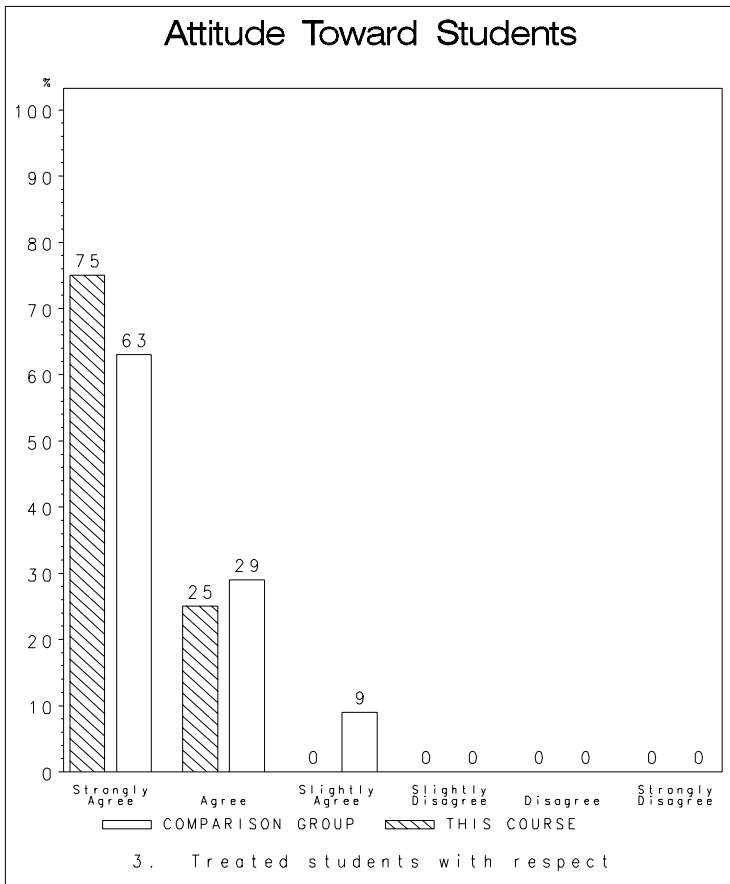
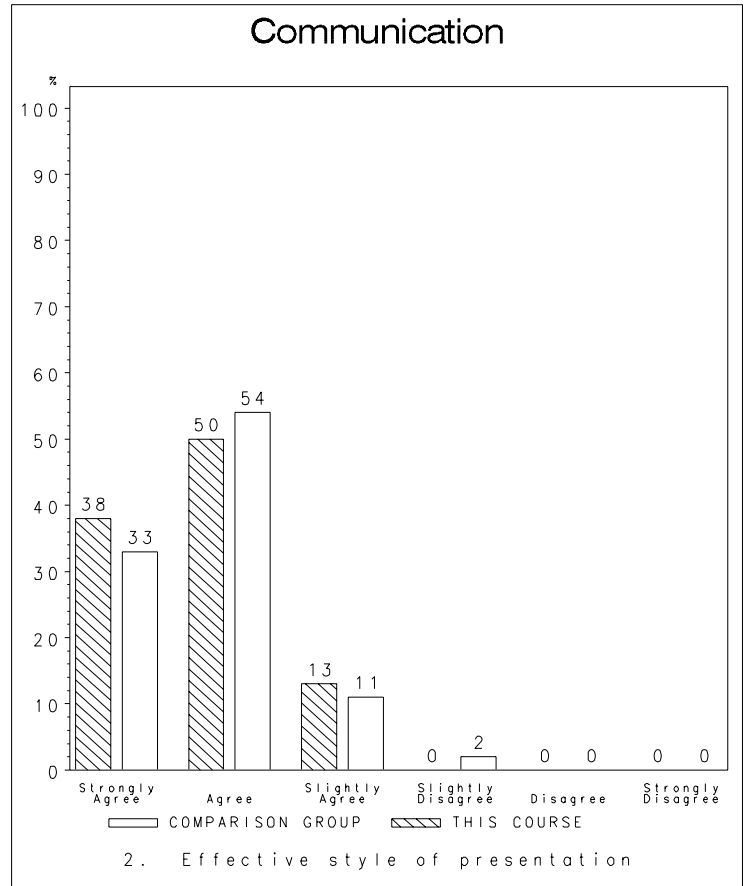
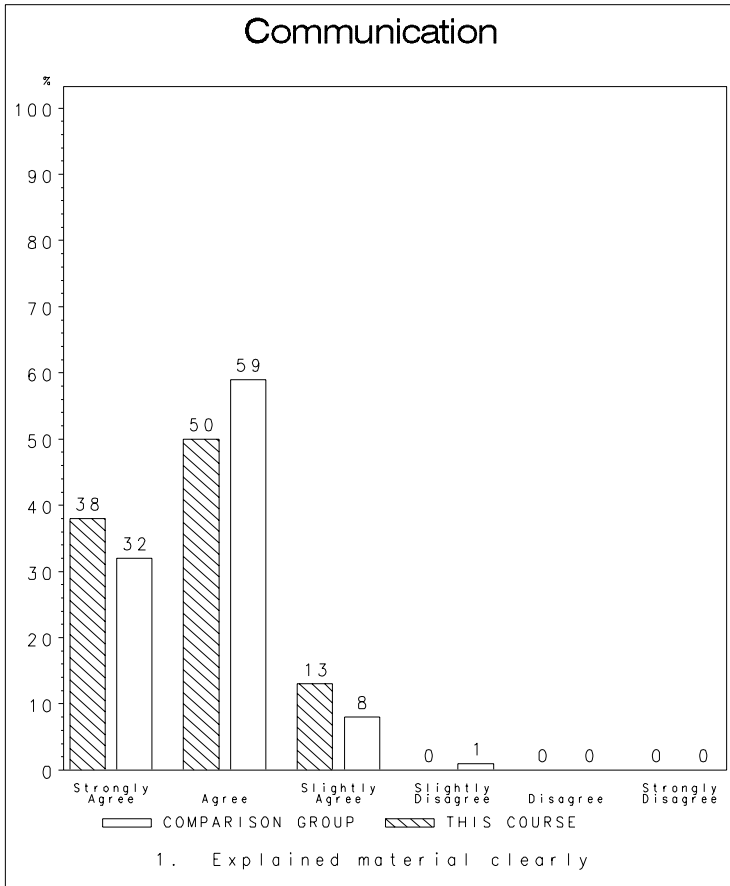
Comparison Group Information

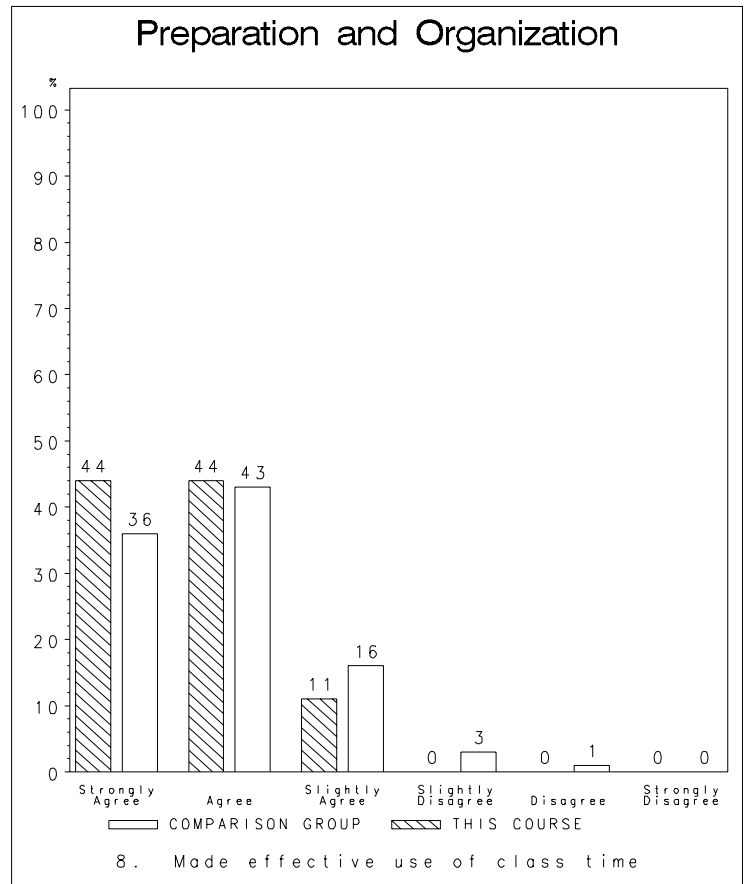
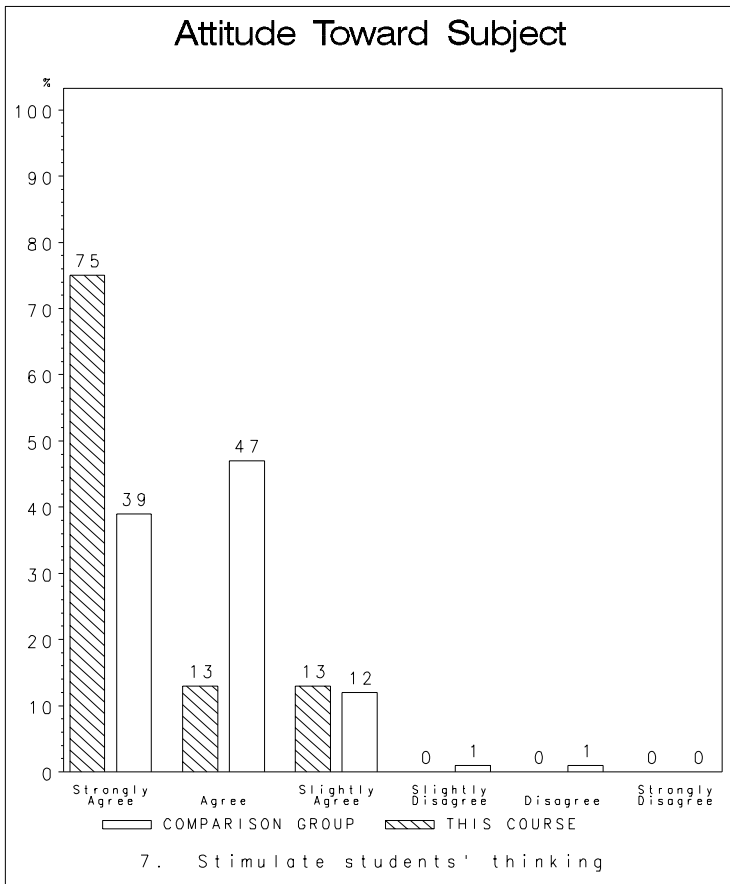
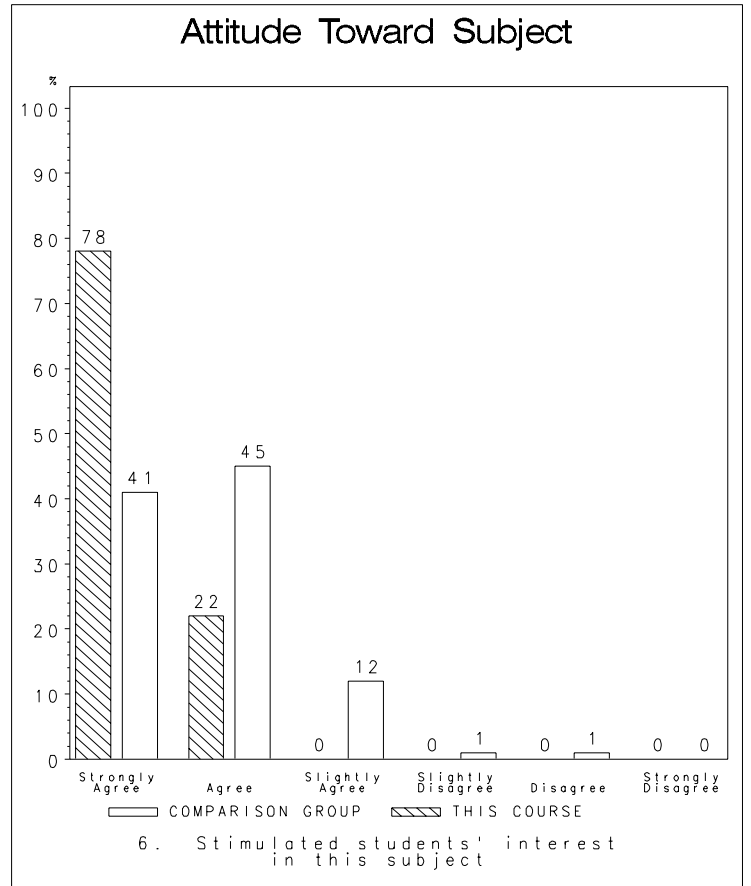
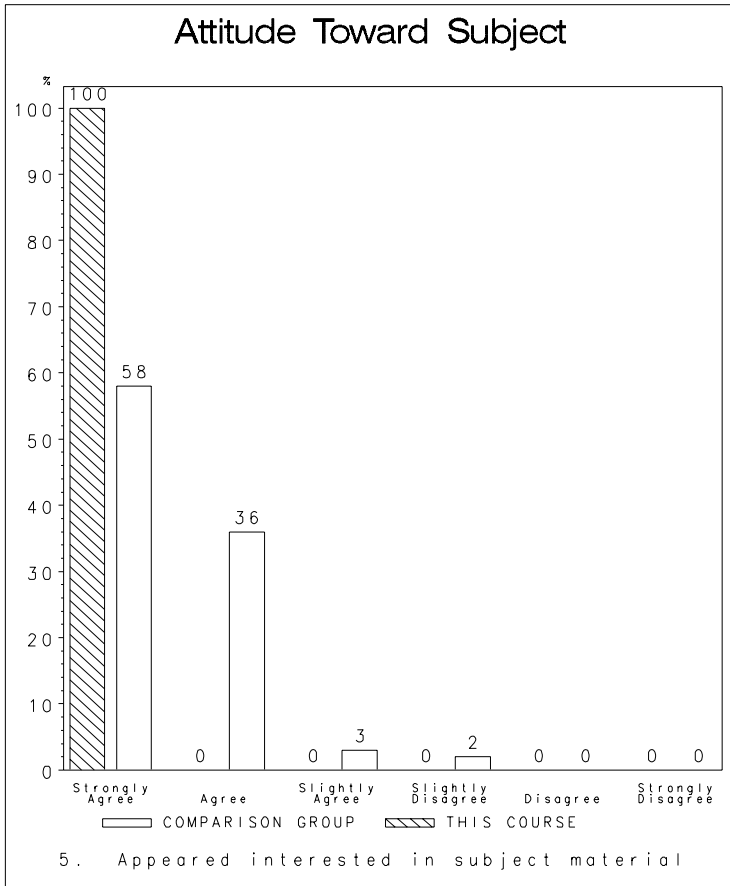
Department	Course	Number of Sections
069	3310	2
069	4320	1
069	4344	2
069	4347	1
069	4350	2
069	4396	2

Number of classes included in comparison group: 10

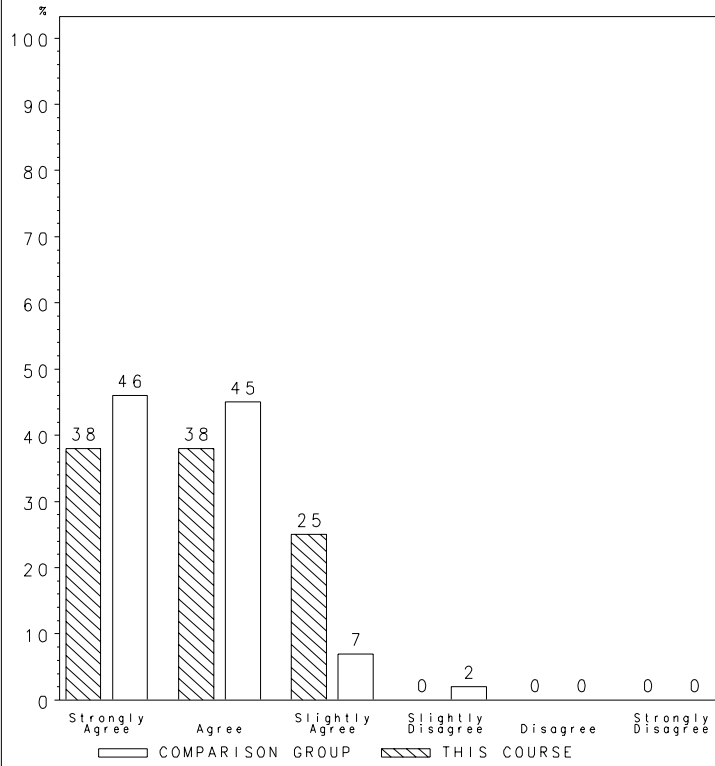
Number of professors in comparison group: 8

This comparison group does not include ANY courses taught by the professor being evaluated.



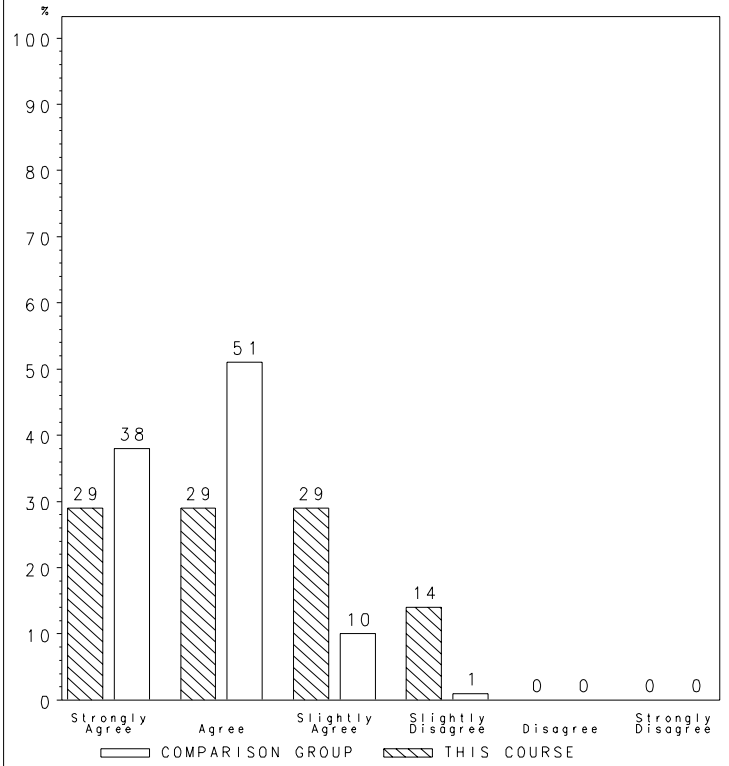


Preparation & Organization



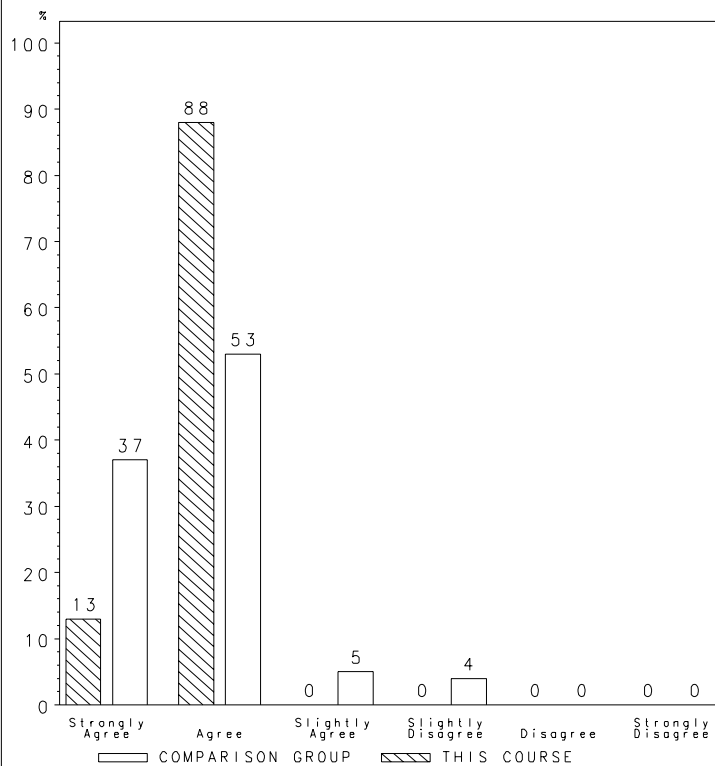
9. Instructor was well-prepared for each class

Preparation & Organization



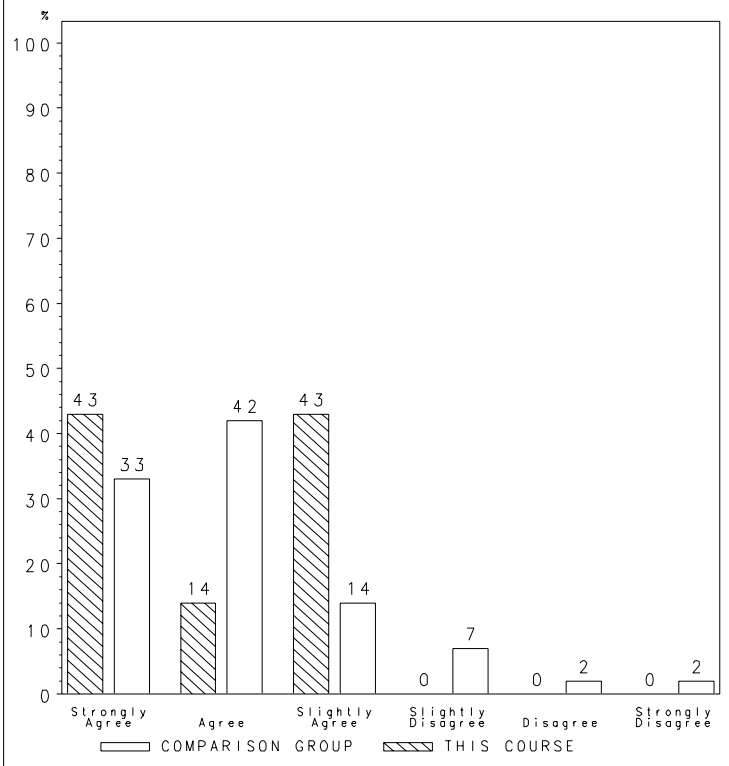
10. Course was well-organized

Policy & Evaluation



11. Class requirements were clearly explained

Policy & Evaluation



12. Exams were good measure of students' knowledge

