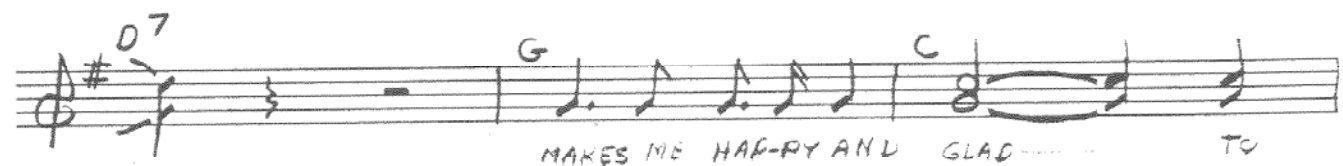
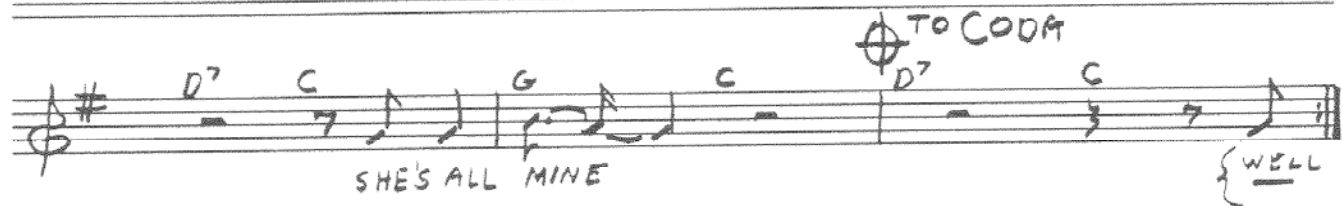
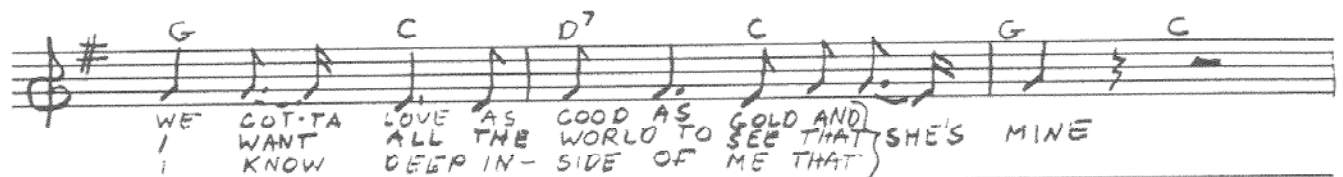
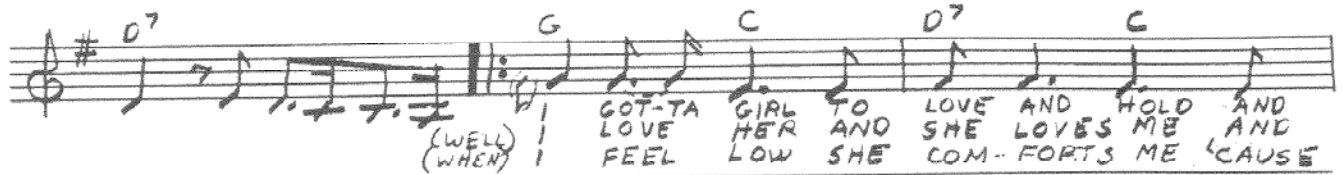
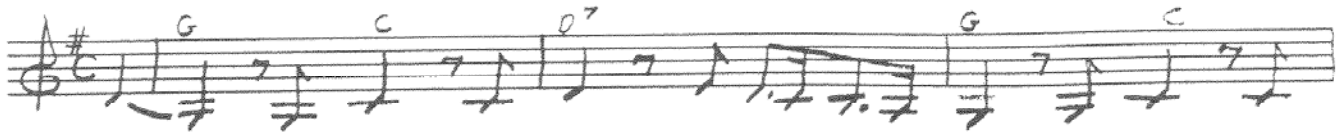


WORDS & MUSIC
by ROBERT J.
MARKS II

SHE'S MINE

(MUS. 14)



Musical notation for the first line, featuring a treble clef, a key signature of one sharp (F#), and a 3/4 time signature. The lyrics are "SAY THAT SHE'S MINE". Chords D7, G, and C are indicated above the staff.

Musical notation for the second line, featuring a treble clef, a key signature of one sharp (F#), and a 3/4 time signature. The lyrics are "SHE'S ALL MINE WHEN". Chords D7, C, G, and D7 are indicated above the staff. A "CODA" symbol is present at the end of the line.

Musical notation for the third line, featuring a treble clef, a key signature of one sharp (F#), and a 3/4 time signature. The lyrics are "SHE'S ALL MINE SHE'S ALL". Chords D7, C, G, C, and D7 are indicated above the staff. A "CODA" symbol is present at the beginning of the line.

Musical notation for the fourth line, featuring a treble clef, a key signature of one sharp (F#), and a 3/4 time signature. The lyrics are "MINE YEAH SHE'S ALL MINE". Chords G, C, D7, C, and G are indicated above the staff.